



*Created With Love*

# The CNC punching machine specialists

**TURRET LINE**

EN

# Vision & Mission

## Our **Vision**

We want to become the benchmark in sheet metal punching technology on a worldwide level. Our company is constantly looking for global, smart and innovative solutions.

## Our **Mission**

We want to give our customers a unique business experience, providing them with the best punching technology. We are not just simple suppliers but real partners who constantly monitor their customers with targeted after-sales services.

# Why rely on the **punching specialists**

## Expertise and reliability

Our long experience in the field has allowed us to acquire a high knowledge in punching technology. Today we share our expertise with our customers, becoming real consultants for them.



## Research and Development

In order to continue to be the Punching Specialists, every year we invest 5% of our turnover in Research and Development. We can thus offer our customers cutting-edge technology.



## Wide range

We offer a wide range of CNC punching machines that allows to find the ideal solution for both small and large companies.



## Always by your side

We are constantly at the customer's side, offering a global after-sales service, so as to be the only reference point for any need.





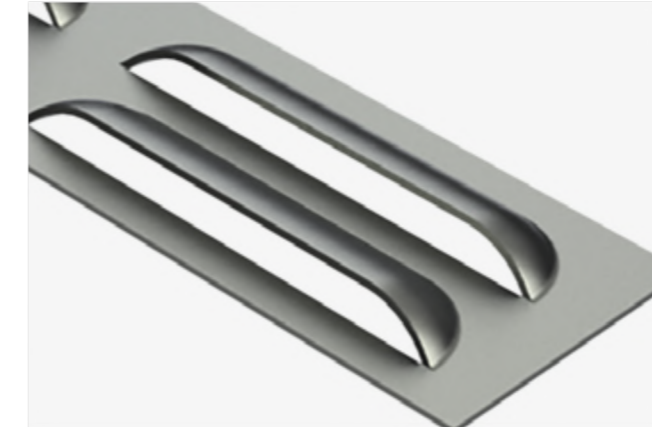
# Processing on sheet metal. **Precision and quality.**

The punching machine is the best solution to perform cutting and/or deformation operations on sheet metal from 1 to 6 mm. All this at low cost, without sacrificing precision and quality.



## Deformations

Different types of deformations can be achieved through the use of special tools of the latest generation.



## Deformations

Single shot or step deformations (e.g. louvers, step louvers)



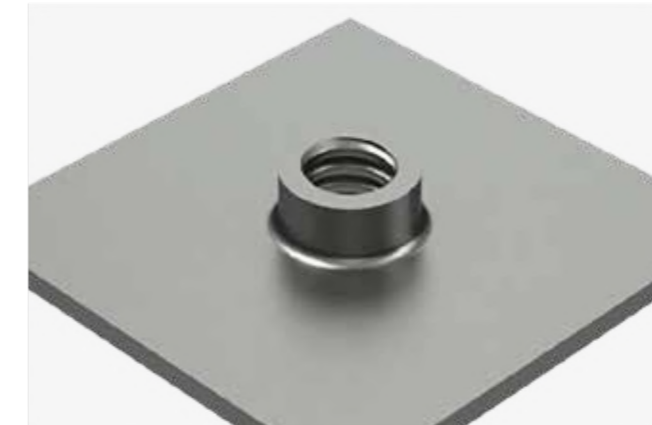
## Embossing

Embossing operations



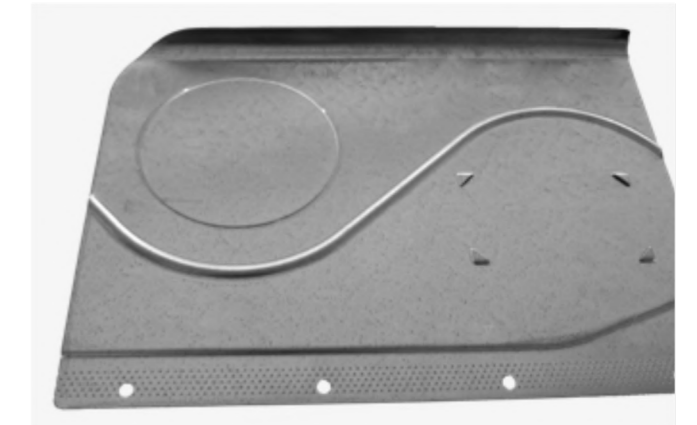
## Marking

Marking machining to realize logos, lettering or other forms.



## Tapping

Tapping without chip removal on holes previously realized.



## High speed forming

CNC functions for the realization of Drag and Drop forming (wheel tools by WILSON TOOL)

# The real. Turret.

Up to  
**48 stations**

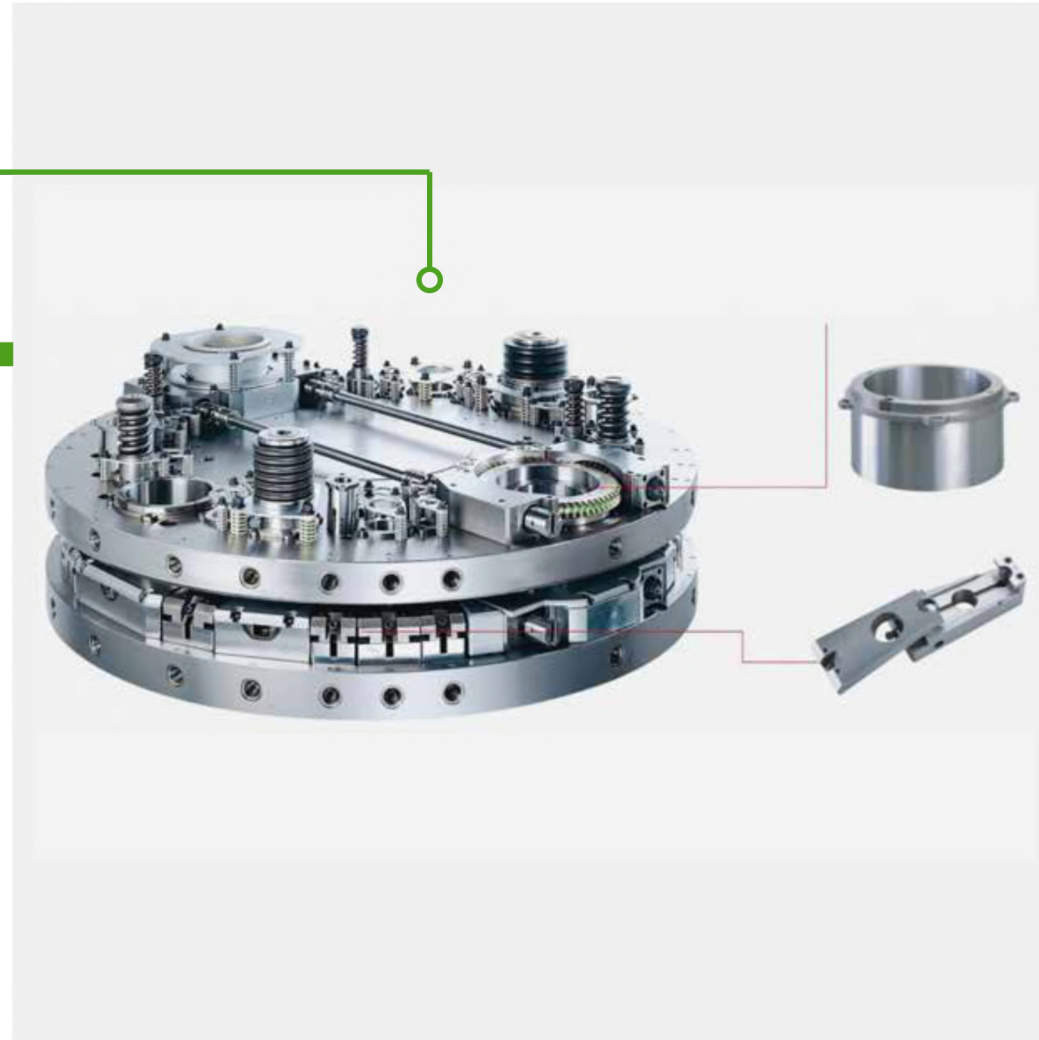
Up to  
**4 stations  
auto-index**

## Thick Turret

(TLX 34E - TLX 40E - TLX 48E)

TECHNOLOGY turrets are equipped with the thick turret tool change system, with a holding capacity of up to 48 tools, including 4 stations with 0° to 360° rotation (auto-index).

The turret of TECHNOLOGY punching machines is one of the highest on the market. This guarantees the best processing quality and maximum tool life, thanks to the possibility of guiding the punch with greater stability.



## Latest generation **servo-electric** technology

**All TECHNOLOGY punching machines look to the future. The outdated hydraulic punching system has been supplanted by the most efficient servo drive technology, adopted by TECHNOLOGY on mosts of its line of punching machines.**

The servo drive system designed by TECHNOLOGY combines excellent performance with significant energy savings. This is a crucial factor in a world that is increasingly moving towards energy efficient solutions.

**SoftPunch mode.** This function allows to considerably reduce the noise when machining thicker workpieces.



**Absence of hydraulic oil.** Reduction in energy consumption and disposal costs due to the absence of hydraulic oil.

**Less maintenance costs:** With fewer components in an electrical system that are exposed to wear and tear, maintenance costs can be significantly reduced.

**Stand-by mode.** During stand-by mode the motors are switched off to reduce power consumption to only 0.4 Kw.

**Absence  
of  
hydraulic  
oil.**

# The turret. Flexible.

Up to  
**52 tools**

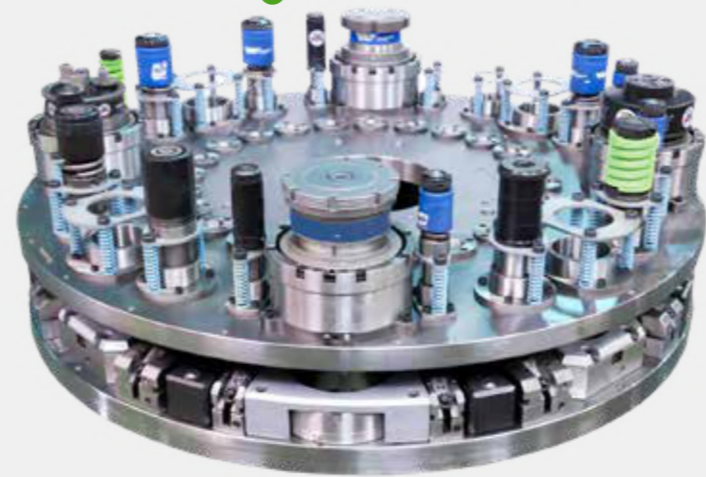
Up to  
**32 auto-index  
tools**

## Multi-tool turret

(TLX 24H - TLX 34H)

Building on the quality and experience gained with thick turret systems, a tool changer with the possibility of using multi-tool systems was developed. This made it possible to obtain a turret tool changer with a loading capacity of up to 52 tools.

The manufacturing quality of the turret system with Multi-tool ensures the best machining quality and maximum tool life.



## Flexibility with Multi-tools

**Multi-tools increase the number of stations and the flexibility of the machine.**

The TLX 24H and TLX 34H turret punching machines can be equipped with Multi-tools with rotating tools for type "D" stations. This allows the use of up to 52 tools.



### Multi-tool auto-index

Multi-tools with 3 or 8 tools can be used. **This brings the number of tools up to 52, of which 32 are auto-index.**

The tools contained in the Multi-tools can be rotated from 0° to 360° (auto-index) in 0.01° steps.



## Advanced servo-hydraulic punching system

The TLX 24H and TLX 34H turret punching machines are equipped with an advanced servo-hydraulic punching system that delivers high performance with low energy consumption.

The **thinking brain** of the machines.



**24** Months warranty

**25** Years of spare parts availability

**263** Branches of assistance in 108 countries

### Why we choose FANUC for the electronic components of our punching machines

As for all CNC machines, also for the punching machine, the electronic component is the essential part, but at the same time the most fragile. For this reason, when talking about the CNC, motors and drives of a machine, it is extremely important to rely on specialized partners.

That is why TECHNOLOGY has selected a top level partner such as **FANUC**, a world leader company able to guarantee maximum reliability, quality and availability of components over time.

## Software **CAD/CAM**

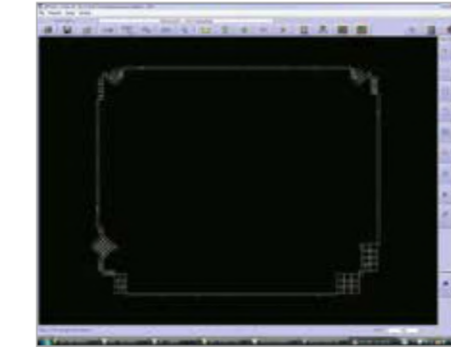
Create programs.

Transfer them to the machine.

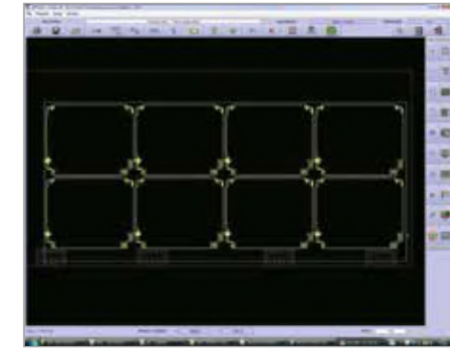
**All in a few steps.**



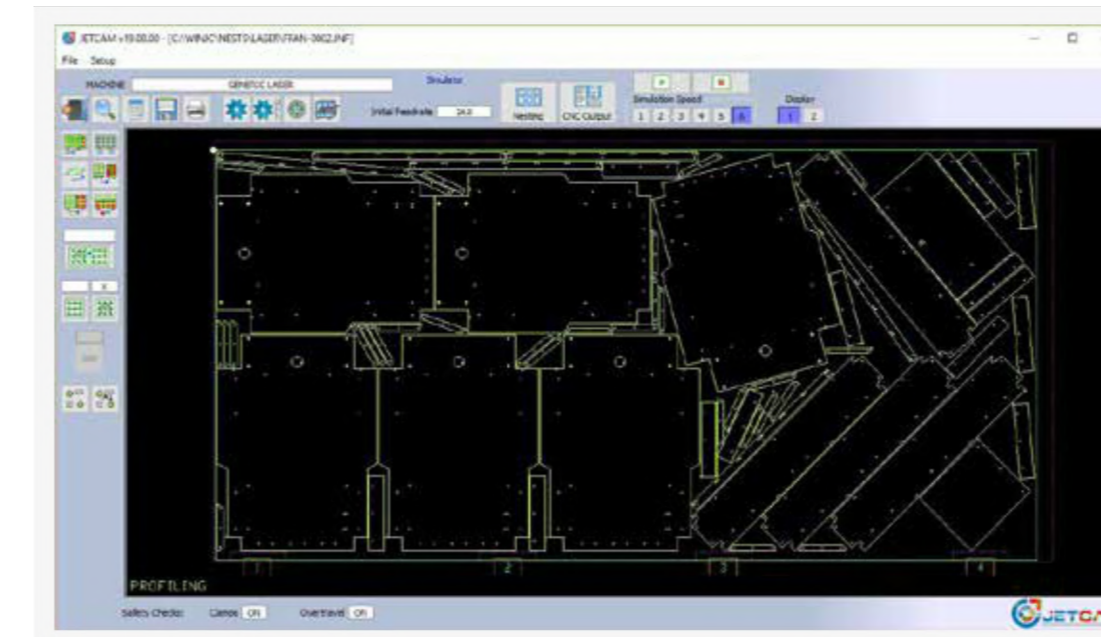
**Step 1**  
Import DXF or DWG files.



**Step 2**  
The software selects the best tools from the libraries to carry out the processing.



**Step 3**  
The nesting is generated and then the CNC code to be loaded into the machine.



Import

**DXF DWG**

### Choose what to program your punching machine with.

After more than 20 years' experience with the JetCam CAD/CAM software house, at TECHNOLOGY we recommend the use of this software to get the best out of your punching machines.

TECHNOLOGY punching machines can also be programmed with the most popular CAD/CAM software such as:

- Computes
- Radan
- Metalix
- Lantek

# 3D CAD Software

A 3D CAD software for design, drawing, 3D modeling and rendering that speeds up and perfects the production of sheet metal companies. A process, that of three-dimensional drawing, which helps to **improve and optimize all production processes**.



## Time and work saving

Advanced functions allow you to speed up the planning phase and optimize the producibility level of the drawing, reducing time of work. Fast also for opening and managing the CAD files receive.

## Immediately operative

Take immediate advantages of the potential! It won't take long to learn because the software is really intuitive.

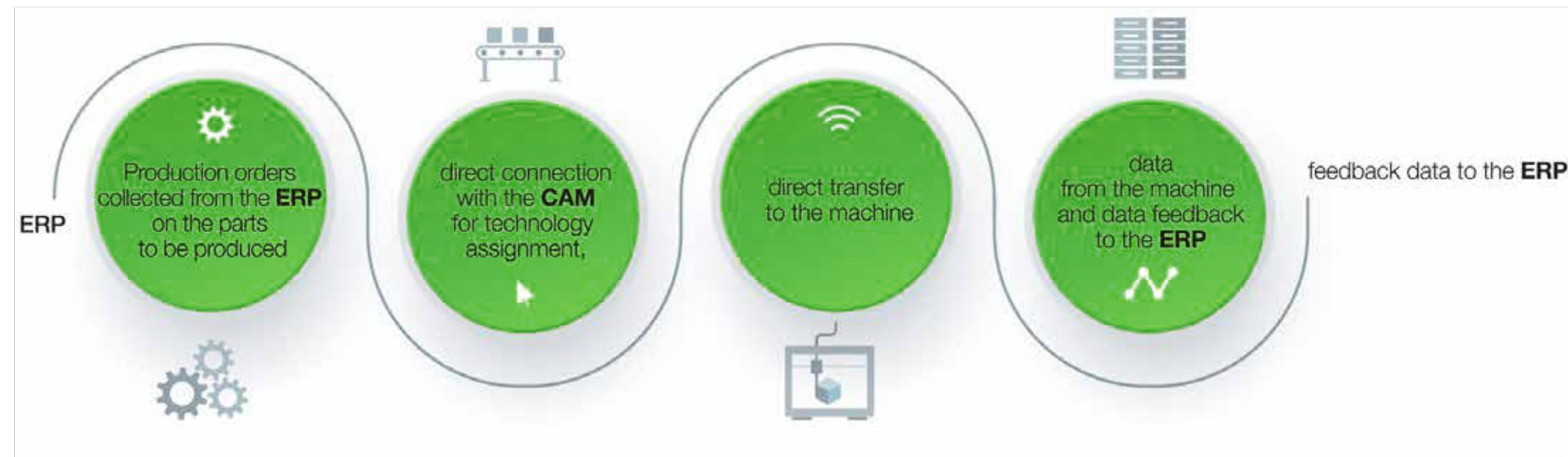
## 2D/3D Solution

The integrated 2D / 3D environment allows you to simultaneously view an object in 3D (including model deformations) and its 2D drawing, as well as sheet metal development and all useful information for the various work phases.

# Smart Factory

Smart **Factory** is a tailor-made solution that integrates production management software, CAMs and machines. In this way, the digitization of information and interconnection within the company is made concrete.

## The tailor-made solution for **Industry 4.0** by **Computes**



### The advantages of an interconnected company

Increased productivity

Data storage more efficient

Reduction of errors in the workflow

Processing monitoring

# TLX 34E

The real thick turret, servo-electric, high-performance punching machine with 34 tool stations, 2 of which are auto-index.



### 34 Stations

Type	Specifications	Quantity
A	1/2" (12,7 mm)	18
B	1 - 1/4" (12,8 - 31,7 mm)	10
C	2" (31,8 - 50,8 mm)	2
D	3 - 1/2" (50,9 - 88,9 mm)	2
Auto-index Stations		
B	1 - 1/4" (12,8 - 31,7 mm)	2

### Technical specifications

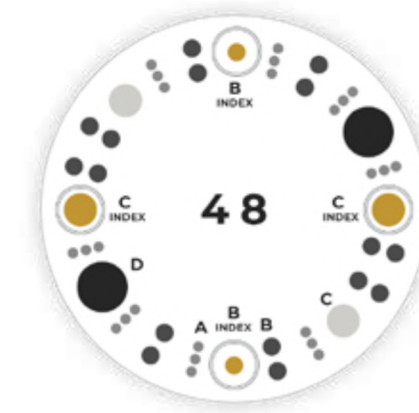
### TLX 34E

	U.M		
<b>Working range</b>	mm	1250x2500	1500x2500
<b>Working range with repositioning</b>	mm	1250x5000	1500x5000
Max. punching force	Ton		30
Max. working thickness	mm		3
Max. sheet weight	Kg		110
X axis stroke	mm	2500±10	2500±10
Y axis stroke	mm	1250±10	1500±10
Simultaneous axis speed	m/min		110
Max. punching frequency	colpi/min		750
Type of tools			Thick Turret
Number of tool stations	n°		34
Number of auto-index tool stations	n°		2
Max. tool size	mm		88.9
Positioning accuracy	mm		±0.1
CNC axes	n°		6
Electrical consumption during operation	Kw		8
Machine dimensions (L x W x H)	mm		5200 x 5050 x 2168
Weight	Kg		14000



# TLX 48E

The real thick turret, servo-electric, high-performance punching machine with 48 tool stations, 4 of which are auto-index.



### 48 Stations

Type	Specifications	Quantity
A	1/2" (12,7 mm)	24
B	1 - 1/4" (12,8 - 31,7 mm)	16
C	2" (31,8 - 50,8 mm)	2
D	3 - 1/2" (50,9 - 88,9 mm)	2
Auto-index Stations		
B	1 - 1/4" (12,8 - 31,7 mm)	2
C	2" (31,8 - 50,8 mm)	2

### Technical specifications

### TLX 48E

	U.M	
<b>Working range</b>	mm	1250x2500
<b>Working range with repositioning</b>	mm	1250x5000
Max. punching force	Ton	30
Max. working thickness	mm	3
Max. sheet weight	Kg	110
X axis stroke	mm	2500±10
Y axis stroke	mm	1250±10
Simultaneous axis speed	m/min	105
Max. punching frequency	colpi/min	750
Type of tools		Thick Turret
Number of tool stations	n°	48
Number of auto-index tool stations	n°	4
Max. tool size	mm	88.9
Positioning accuracy	mm	±0.1
CNC axes	n°	6
Electrical consumption during operation	Kw	8
Machine dimensions (L x W x H)	mm	5200 x 5050 x 2168
Weight	Kg	16000

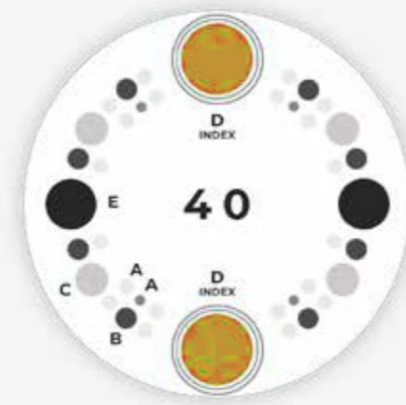
# TLX 40E

The real thick turret, servo-electric, high-performance punching machine with 40 tool stations, 2 of which are auto-index



**30 tons**  
of force

working range  
**2000**  
x  
**2500**



### 40 Stations

Type	Specifications	Quantity
A	1/2" (12,7 mm)	24
B	1 - 1/4" (12,8 - 31,7 mm)	8
C	2" (31,8 - 50,8 mm)	4
D	3 - 1/2" (50,9 - 88,9 mm)	2
E	4 - 1/2" (90 - 114,3 mm)	2
Auto-index Stations		
D	3 - 1/2" (50,9 - 88,9 mm)	2

### Technical specifications

### TLX 40E

	U.M	
<b>Working range</b>	mm	2000x2500
<b>Working range with repositioning</b>	mm	2000x5000
Max. punching force	Ton	30
Max. working thickness	mm	4,5
Max. sheet weight	Kg	150
X axis stroke	mm	2500±10
Y axis stroke	mm	2000±10
Simultaneous axis speed	m/min	105
Max. punching frequency	colpi/min	750
Type of tools		Thick Turret
Number of tool stations	n°	40
Number of auto-index tool stations	n°	2
Max. tool size	mm	114,3
Positioning accuracy	mm	±0.1
CNC axes	n°	6
Electrical consumption during operation	Kw	8
Machine dimensions (L x W x H)	mm	6500 x 5200 x 2250
Weight	Kg	14000

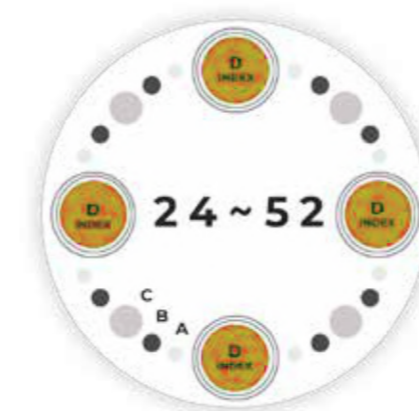
# TLX 24H

The real thick turret, servo-hydraulics, high-performance punching machine with the capability of 24 to 52 tools. With the use of Multi-tools up to 32 auto-index tools.



**52**  
tools

**32**  
auto-index  
tools



### 24~52 Stations

Type	Specifications	Quantity
A	1/2" (12,7 mm)	8
B	1 - 1/4" (12,8 - 31,7 mm)	8
C	2" (31,8 - 50,8 mm)	4
Auto-index Stations		
D	3 - 1/2" (50,9 - 88,9 mm)	4

### Technical specifications

### TLX 24H

	U.M	
<b>Working range</b>	mm	1250x2500
<b>Working range with repositioning</b>	mm	1250x5000
Max. punching force	Ton	20
Max. working thickness	mm	6
Max. sheet weight	Kg	110
X axis stroke	mm	2500±10
Y axis stroke	mm	1250±10
Simultaneous axis speed	m/min	110
Max. punching frequency	colpi/min	750
Type of tools		Thick Turret
Number of tool stations	n°	24~52
Number of auto-index tool stations	n°	4~32
Max. tool size	mm	88.9
Positioning accuracy	mm	±0.1
CNC axes	n°	6
Electrical consumption during operation	Kw	8
Machine dimensions (L x W x H)	mm	5420 x 5085 x 2080
Weight	Kg	14000

# TLX 34H

The real thick turret, servo-hydraulics, high-performance punching machine with 34 tool stations, 2 of which are auto-index



**30 tons**  
of force

working range  
**1500**  
x  
**2500**



34 Stations		
Type	Specifications	Quantity
A	1/2" (12,7 mm)	18
B	1 - 1/4" (12,8 - 31,7 mm)	10
C	2" (31,8 - 50,8 mm)	2
D	3 - 1/2" (50,9 - 88,9 mm)	2
Auto-index Stations		
B	1 - 1/4" (12,8 - 31,7 mm)	2

## Technical specifications

## TLX 34H

	U.M	
<b>Working range</b>	mm	1500x2500
<b>Working range with repositioning</b>	mm	1500x5000
Max. punching force	Ton	30
Max. working thickness	mm	3
Max. sheet weight	Kg	110
X axis stroke	mm	2490±10
Y axis stroke	mm	1525±10
Simultaneous axis speed	m/min	105
Max. punching frequency	colpi/min	600
Type of tools		Thick Turret
Number of tool stations	n°	34
Number of auto-index tool stations	n°	2
Max. tool size	mm	88.9
Positioning accuracy	mm	±0.1
CNC axes	n°	4+1
Electrical consumption during operation	Kw	8
Machine dimensions (L x W x H)	mm	5200 x 5050 x 2168
Weight	Kg	14000

# Turret Line



# A global service for punching

Choosing **The punching specialists** means relying on a single partner able to offer global and exclusive services for punching.



## Specialized technicians always by your side

Our specialized technicians intervene in all the countries where we have installed TECHNOLOGY punching machines.



### TECHNOLOGY FIRST service program

If you subscribe to the TECHNOLOGY First program you will have access to many advantages and discounts on all services. It is reserved to each customer possessing a TECHNOLOGY punching machine.



### Other Services

- Retrofit of your TECHNOLOGY CNC Punching Machine
- Scheduled maintenance
- Original spare parts
- Online portal to sell your CNC punching machine

## Thick turret punching tools

Thick Turret (Amada style) standard and special tools allow a variety of processing operations on sheet metal.

We offer you a wide range of tools that can be purchased directly from our online shop.

Specialist consultants are available to help you choose the most suitable tool and to support you in the design of special tools (e.g. logos).



## The first online shop for tools and spare parts

Buy tools for your CNC punching machine online at our TECHNOLOGY Shop.

- Buy when you want 24/7.
- Prices displayed without registration

[www.egp-universe.com](http://www.egp-universe.com)



*Created With Love*

The CNC punching  
machine specialists

**TEL: +90 507 651 36 66**

EAST GATE PROJECT MAKİNE SANAYİ TİCARET LİMİTED ŞİRKETİ  
ADRES: İhlamurkuyu Mh. Didenur Sk. No:1/7 34771 Ümraniye / İSTANBUL

**[www.egp-universe.com](http://www.egp-universe.com)**